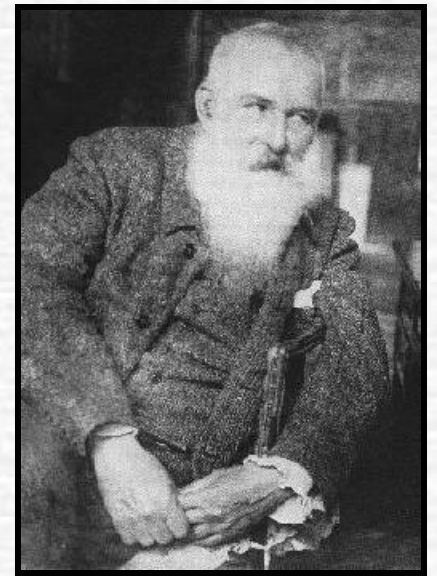
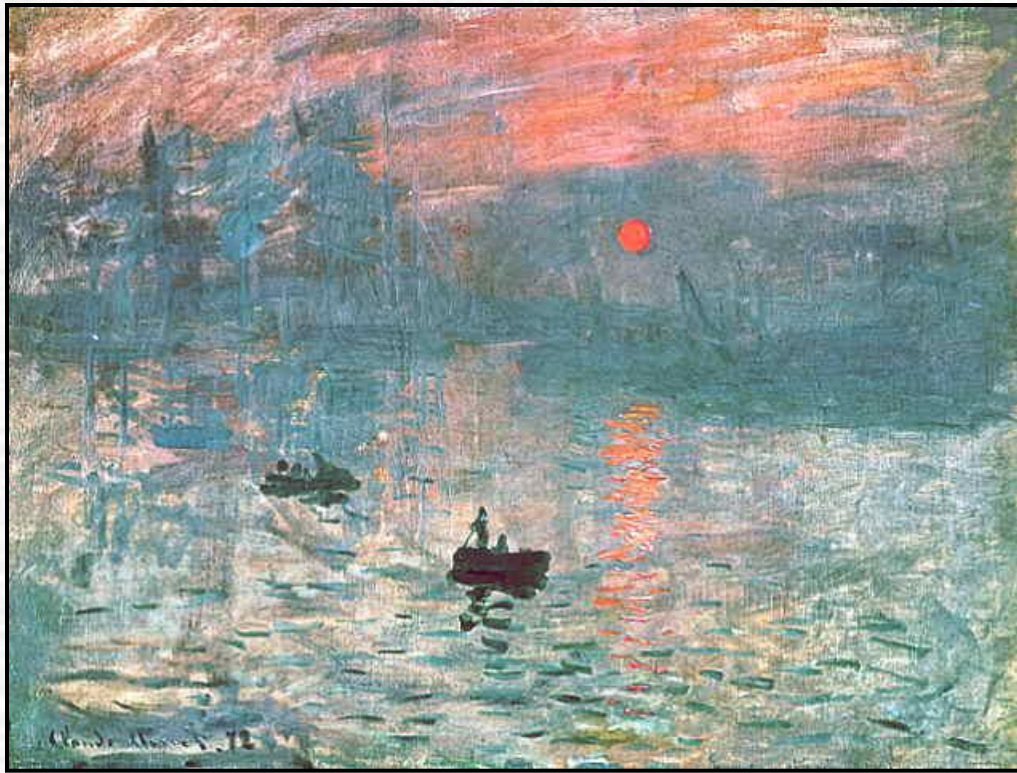




Claude Monet





Claude Monet was the most important of the Impressionist Painters.

Impressionist painters used color and brushstrokes in a new way.

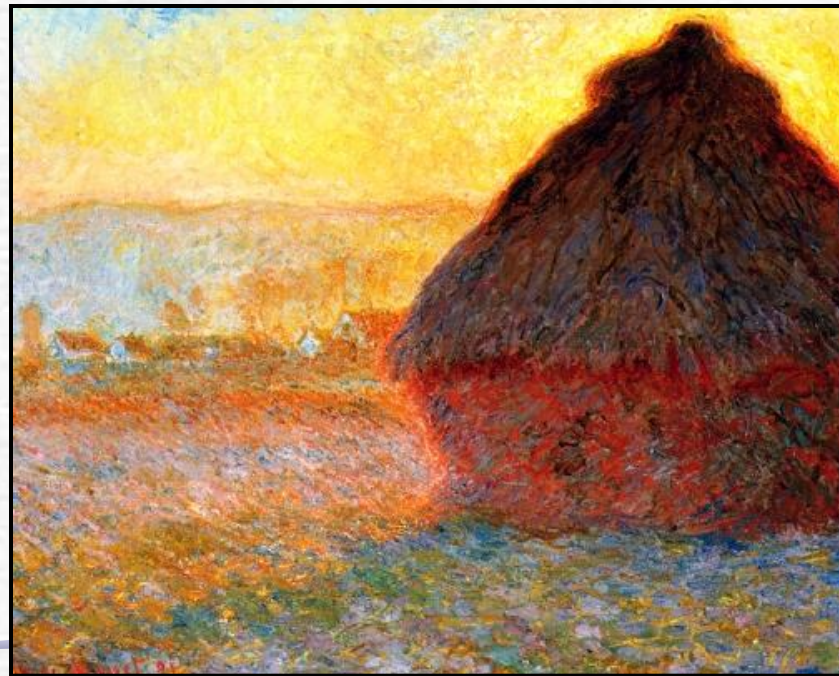


Claude believed in painting by layering colors of paint.



There are almost never any outlines in Impressionist Art!
The whole painting is just blobs and smears of color!

Claude tried to show the changing colors and shadows during the day. He painted this same haystack many times. Do you know what time of day Claude painted this?





Other times Claude would paint the same picture at different times of the year. This was painted in the winter.



Look closely at this painting. Can you see the brush strokes that Claude used?

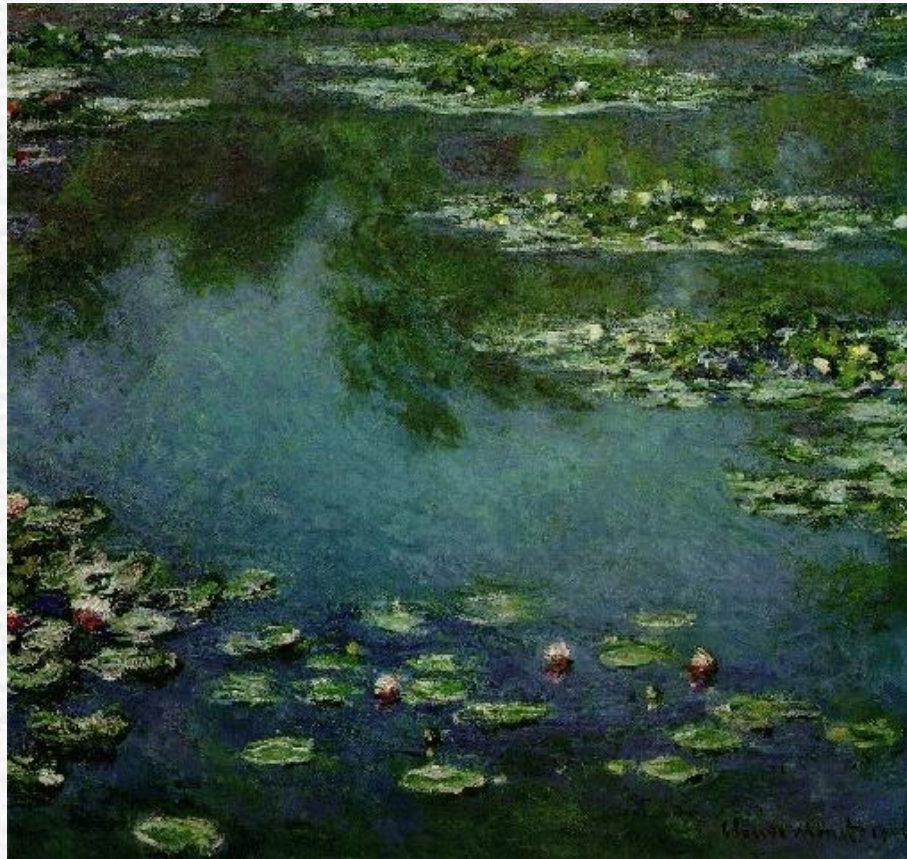
Claude
loved to
paint the
pond at his
house in
Giverny.





More than anything, Claude loved to paint the water lilies in his pond.

In his water lily paintings Claude liked to paint the reflections of light and color in the water.

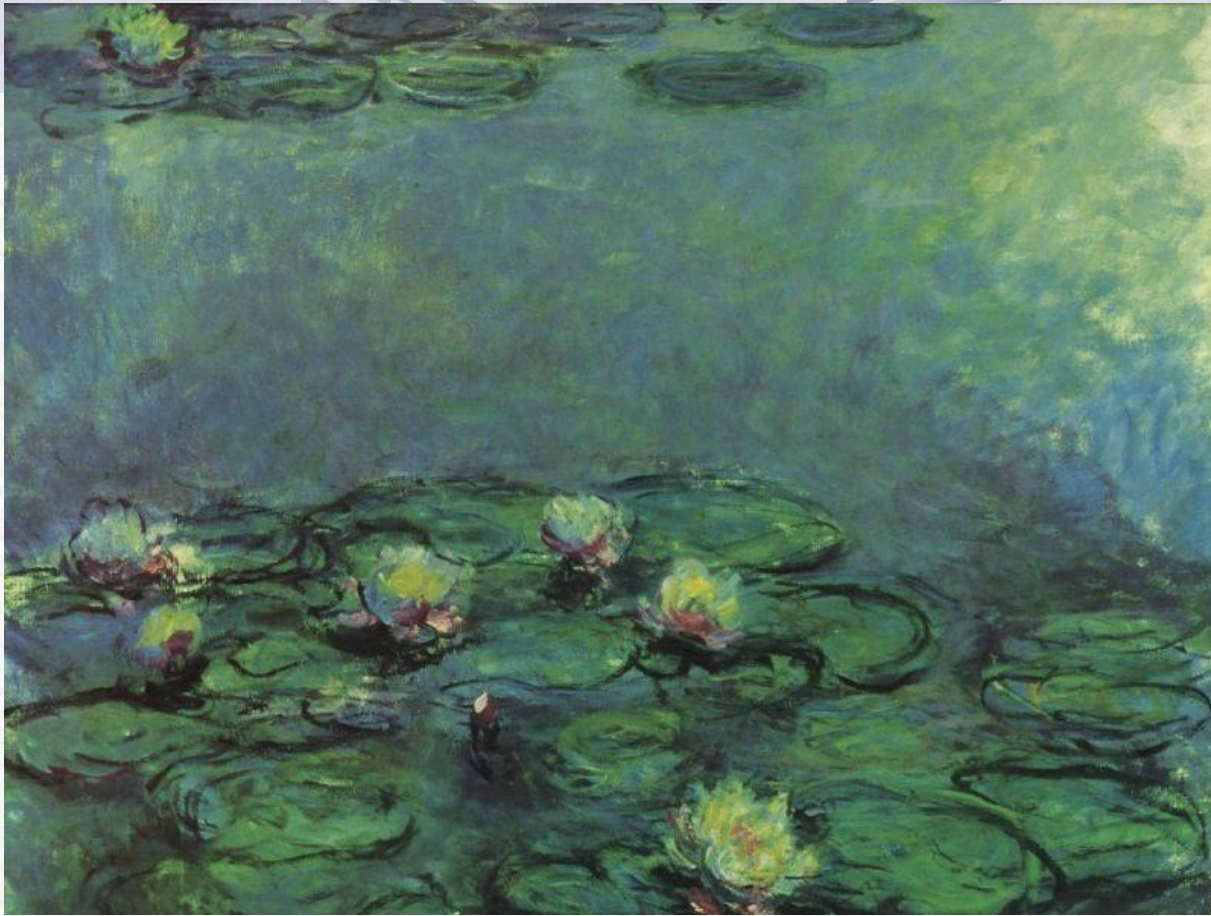




Here's the Japanese bridge that Claude had built over his pond!



In this picture
Claude used his
Impressionist style
of layering to paint
his wife, Camille.



Claude painted many things, but he is probably best known for his beautiful water lily paintings.



Now let's read about French art and culture!

Et vive la France!